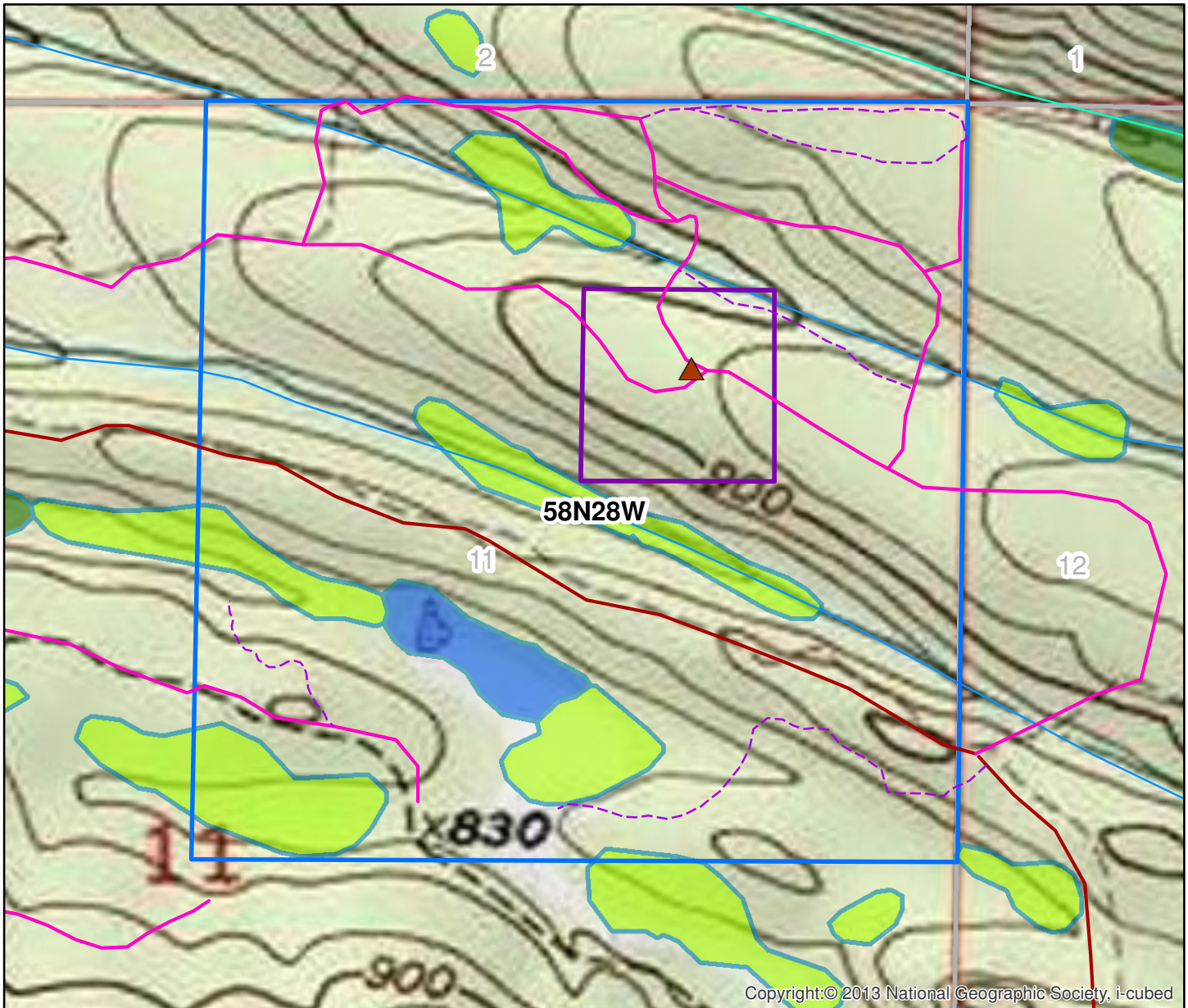


LANDOWNER TOPOGRAPHY & WETLANDS MAP

T. __ N. - R. __ W.
NE 1/4 of Section 11
Peninsula County, Waterway

-NOT A SURVEY MAP-
This map was not prepared by a professional
Land Surveyor, and is not a Legal Survey.
Use is limited to applications consistent
with the intent and accuracy of source data
for visual representation of property and
geographic features. No guarantees or
warranties are expressed or implied.



Copyright:© 2013 National Geographic Society, i-cubed

Legend

- | | |
|-------------------|------------|
| Property Boundary | Woods Road |
| Non-CF Boundary | Trail |
| Wetlands Boundary | Camp |
| Town / Range | River |
| Section | Stream |
| Clark Mine Road | |

Wetland Types

- | | |
|--|-----------------------------------|
| | Freshwater Emergent Wetland |
| | Freshwater Forested/Shrub Wetland |
| | Freshwater Pond |
| | Lake |
| | Riverine |

