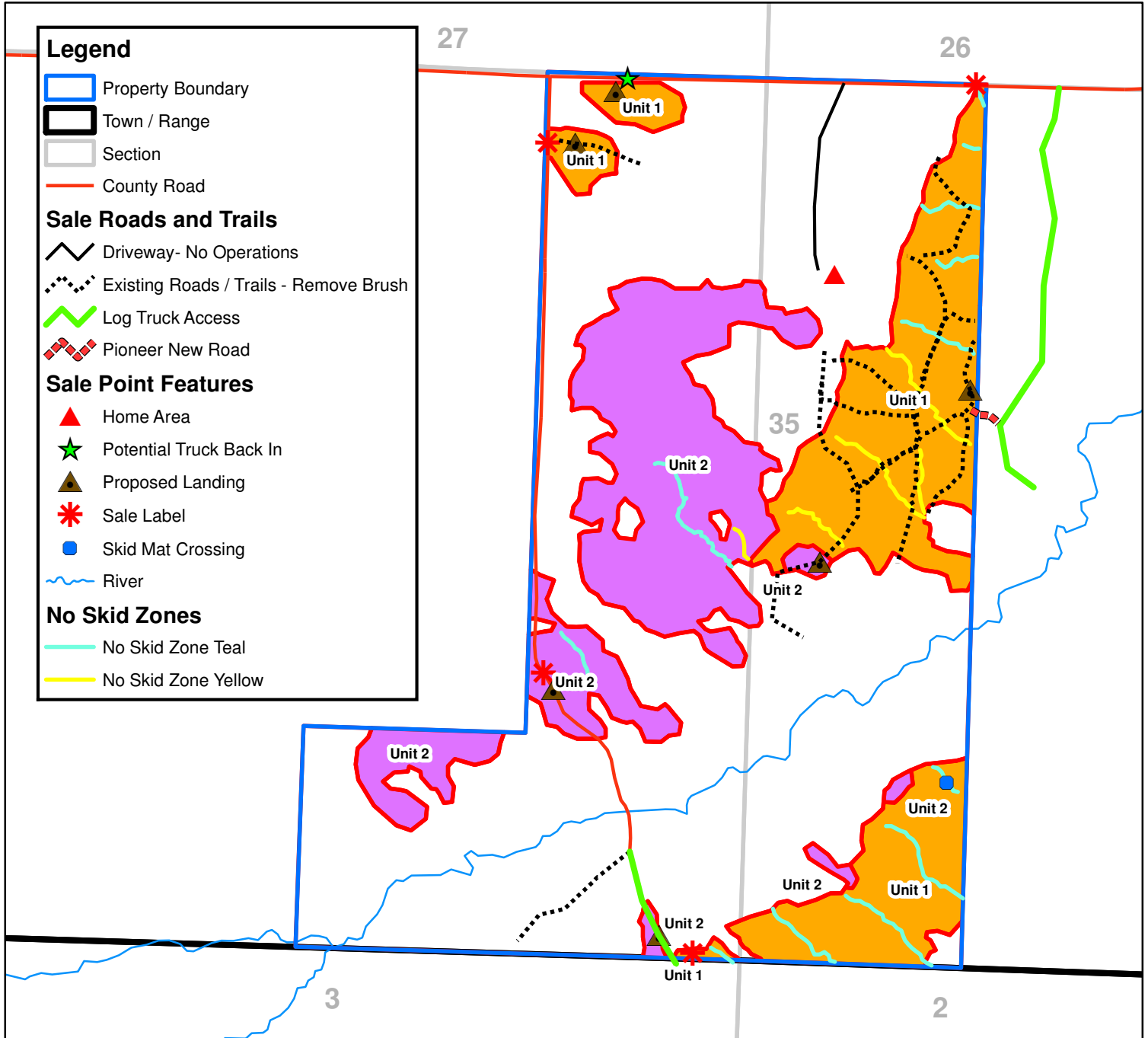


TIMBER SALE MAP
 T. __ N. - R. __ W.
 E1/4 & SW1/4 SE1/4 of Section 34
 W1/4 of Section 35
 Some County, Somewhere

-NOT A SURVEY MAP-
 This map was not prepared by a professional
 Land Surveyor, and is not a Legal Survey.
 Use is limited to applications consistent
 with the intent and accuracy of source data
 for visual representation of property and
 geographic features. No guarantees or
 warranties are expressed or implied.



Harvest Unit Instructions

- Unit 1: Individual Tree Selection and Species Removal - Cut all trees marked with orange paint and cut all merchantable aspen, spruce, fir and ironwood.
Unit 1 = 68.7 acres.
- Unit 2: Modified Clearcut- Cut all trees 5 inches dbh and greater Except: hemlock, cedar, pine, oak and elm.
Unit 2 = 62.4 acres

