



GREEN TIMBER TREE FARM GROUP 2026 NEWSLETTER

2026 Tree Farm Group Member of the Year, Jamie Davidson, enjoys a walk in his northern hardwood stand thinned in 1990, 2000, and 2014.

[LEARN MORE ON PAGE 2 →](#)

2

Member of
the Year

5

Meet the
Members

6

Eye on the
Market

8

What is a
Den Tree?

10

The Woodland
Wire

INSIDE THIS ISSUE

Group Managers Letter	4
Meet the Members	5
Eye on the Market	6
“Wood” You Look at That?	7
What is a Den Tree?	8
Chainsaw Safety	9
The Woodland Wire	10
Green Timber Awards	11
Forest Health Checkup	12



TREE FARM GROUP MEMBERS OF THE YEAR

2009	John & Kristine Niemela
2010	Dennis Myllyla
2012	Stanton Township
2013	Phil & Charlene Waatti
2014	Mike & Julie Kinsel
2015	Steve Waslawski & Mary Curran
2016	Dead River Campers, Inc.
2017	Jim & Pam Grundstrom
2018	Dan Carlson
2019	Sampo Club
2020	Upper Peninsula Land
2021	Terra Indomita Tree Farm
2022	Nathan Miller & Elizabeth Fujita
2023	Wolf Lands, Inc.
2024	Otter Point Tree Farm
2025	Zutter Tree Farm
2026	Jamie Davidson Tree Farm



SCAN & SHARE!
Scan this code for the PDF version of this newsletter.

2026 TREE FARM GROUP MEMBER OF THE YEAR

JAMIE DAVIDSON TREE FARM

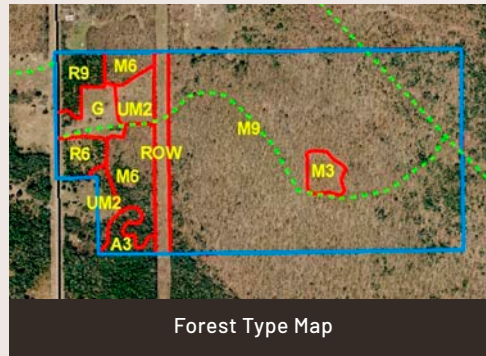
James “Jamie” Davidson and his wife Janet are the proud owners of 77 acres of forestland approximately five miles Southwest of Newberry in Michigan’s Upper Peninsula.

In 1968, Jamie was a combat infantry officer in Vietnam. With an extra \$50 a month in combat pay, he asked his father to purchase some land for him in the UP. As a young boy, Jamie and his family spent several summers (before the bridge) at a fish camp on North Manistique Lake and he always remembered the UP as a special place.

After Vietnam and a stint as a teacher, Jamie transferred to the Navy and served 20 years on active duty, retiring as a Commander. He then had a second career as a community college instructor and administrator. Through all the changes in Jamie’s life, the property in the UP remained a constant presence, with Jamie and Janet frequently making the 315-mile drive from their home in Eaton Rapids. Jamie’s 58-year commitment to responsible forest management has earned him recognition as the 2026 Green Timber Tree Farmer of the Year.

COMMITMENT TO PROFESSIONAL FORESTRY GUIDANCE

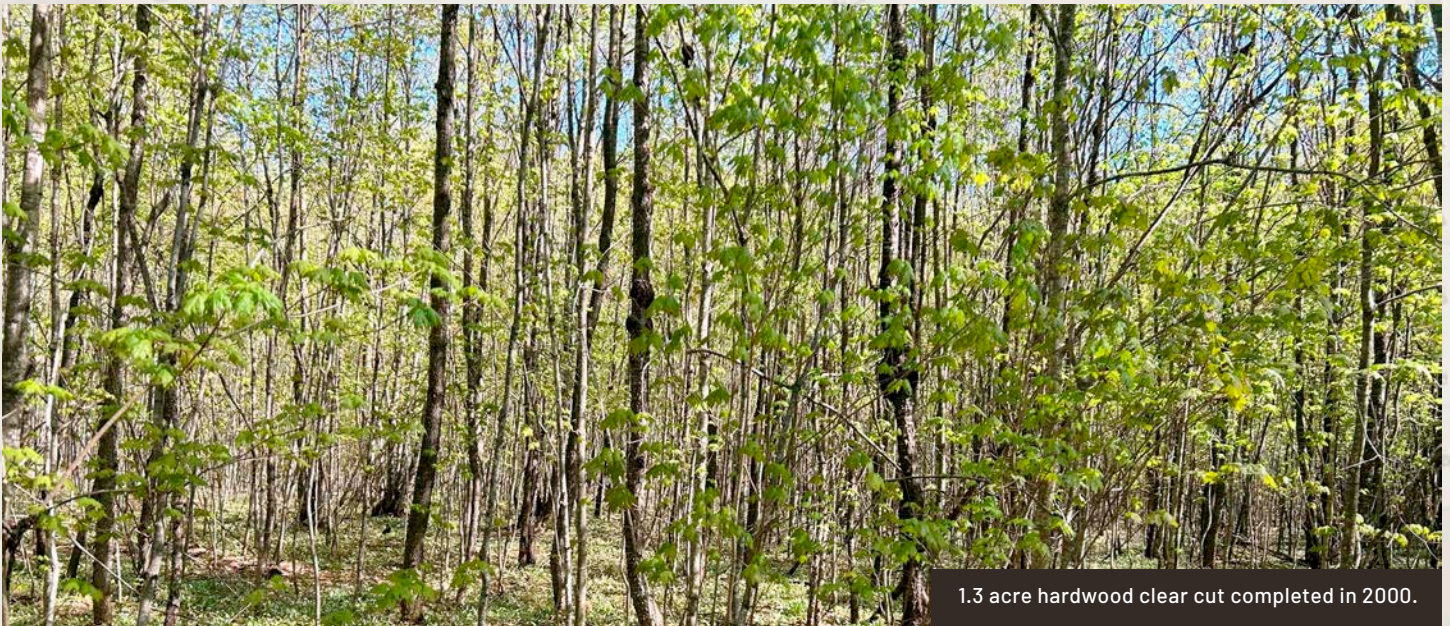
During his years on active military duty and beyond, Jamie sought and applied expert forestry advice. Prior to Jamie’s purchase, the land had been farmed but then abandoned, with no active management for many decades. A forest management plan was developed by DNR forester Dean Reid in 1974.



Forest Type Map

Dean recommended tree planting in the old agricultural fields along the western portion of the property. **Over the years, Jamie and Janet planted more than 5,000 trees for wildlife habitat, reforestation, and to screen the property from the county road. Most of these tree plantings were successful.**

The forest management plan was updated in 1990 by DNR forester Bob Devillez with the property becoming a certified Tree Farm. Jamie joined the Grossman Forestry Tree Farm Group in 2013 after receiving a forest stewardship plan through Grossman. A new forest stewardship plan was developed again in 2025 by Green Timber Consulting Foresters, and the property was then enrolled in Michigan’s Qualified Forest Program the same year, reducing annual property taxes. The current forest composition is 82% northern hardwoods, 7% upland openings including a regional powerline right-of-way, 5% red pine, 4% upland mixed softwood and hardwood, and 2% aspen.



1.3 acre hardwood clear cut completed in 2000.

FOREST STEWARDSHIP IN ACTION

In addition to planting over 5,000 trees, Jamie has consistently implemented recommended hardwood management practices. The first commercial timber sale (hardwood thinning and one-acre aspen clearcut) occurred in 1990, followed by 18 acres of pre-commercial thinning in 1993. These treatments ensured that future growth was prioritized on high-quality trees.

A second commercial thinning in the hardwoods took place in 2000, which also included a small hardwood clearcut designed to enhance wildlife diversity. The third thinning was completed in 2014. Critical to the success of these hardwood thinnings was that individual trees were marked by qualified consulting foresters, targeting inferior stem removal and residual tree spacing targets. Grossman Forestry Company (now Green Timber) administered all timber sales to ensure contract compliance, utilization standards, and protection of residual trees and forest conditions.

YEAR	ACRES	VOLUME HARVESTED
1990	40	32.5 MBF and 184 Cords
2000	45	32.0 MBF and 140 Cords
2014	61	42.1 MBF and 224 Cords

These harvests produced a total of 106.6 thousand board feet (MBF) and 548 cords. As of 2025, the 56-acre hardwood stand is estimated to contain 237 MBF and 991 cords of standing volume.

A MODEL OF LONG-TERM STEWARDSHIP

Over nearly six decades, the Davidson Tree Farm has provided countless hours of recreation and enjoyment for Jamie, his family, and friends.

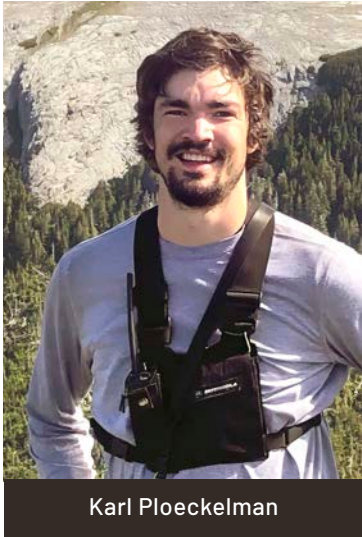
It is a shining example of how private landowners can improve forest health, support wildlife, generate periodic income, and create a sustainable legacy for future generations.



Small cabin built in 1992 after Jamie retired from the Navy.

LETTER FROM THE GROUP MANAGERS

As we reflect on the past year with the Green Timber Tree Farm Group, a central theme continues to stand out: relationships and community.



Much of the day-to-day work behind the scenes of managing a group like ours can feel routine at times—updating contact information, maintaining records, and keeping certification documentation in order. These tasks are necessary to keep the program running smoothly, but they don't always highlight the bigger picture.

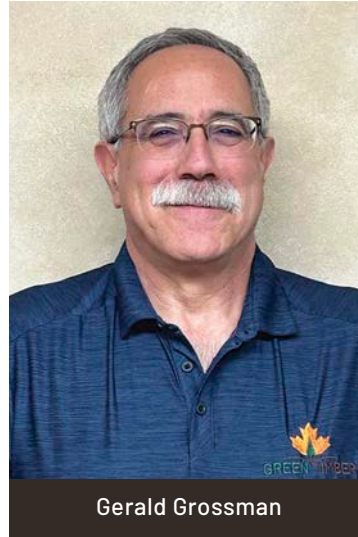
What consistently brings that bigger picture back into focus are the conversations we have with our members.

Whether we're connecting with long-time participants or welcoming new landowners into the group, we're reminded of where the real value lies. **It's in the relationships we build and maintain over time.**

When a member notices something new in their woods, is thinking about their next management activity, or simply wants to talk through an idea for their land, they know who to call. That familiarity and trust are not built overnight—they come from years of working together and staying connected.

We see that every time we pick up the phone or meet in the field. Conversations range from forest management planning and timber harvesting activities to stories about a recent successful hunt on the property.

Through it all, there is a shared connection—to the land, to good stewardship, and to each other. That sense of community is, ultimately, one of the most meaningful benefits of being part of this group.



Looking ahead, 2026 marks a new chapter for us. Over the past year, we have completed the merger of the Green Timber and Grossman Tree Farm Groups into a single certified entity. This transition allows us to operate more efficiently behind the scenes and positions the group for long-term sustainability under one unified certification.

At the same time, we recognize the strong foundations that both groups have built over the past 20 to 30 years. The relationships, local knowledge, and trust developed during that time remain central to how we operate. While we are now moving forward as a single, unified group, our day-to-day approach will remain familiar.

Your local foresters and group managers—the people who know your property and understand your goals—will continue to be your primary point of contact.

We appreciate the opportunity to work with each of you and look forward to continuing to build on the connections that make this group what it is. Thank you for your continued support of the Green Timber Tree Farm Group and for your commitment to the sustainable management and care of our area's natural resources.

Sincerely,


Karl Ploeckelman
Tree Farm Group Manager


Gerald Grossman
Tree Farm Group Manager

MEET THE MEMBERS

Get a glimpse into the personal stories, projects, and special moments that make each property unique—reminding us that we are part of a community that shares a common love of the land and a commitment to stewardship.



PELKIE PROPERTY TREE FARM

Bogue and Ann Sandberg's 132-acre tree farm is located ten miles west of Baraga. In addition to skiing and hiking on their property, they also enjoy hunting deer, turkey, and grouse. Family and friends are often welcomed to Sandberg's tree farm, where they participate in recreational and hunting activities, assist with trail maintenance, and enjoy the social aspect of gathering with the community. Trails throughout the property offer top-notch recreational opportunities, while the varied forest structure—shaped through years of active management—provides diverse wildlife habitat.

WANT TO BE FEATURED NEXT YEAR?

Share a photo of yourself or your property along with a brief caption about what makes your land special. Whether it's a peaceful view, a wildlife moment, or a forestry project, we want to showcase the ways our members engage with their land.

Submissions due by December 31, 2026.

EMAIL karl@greentimberforestry.com
or TEXT 906-201-0044

MOOSE HOLLOW TREE FARM

This 196-acre property, owned by Matt and Becky Vettraino, is located in Marquette County, four miles south of Big Bay. Although the family of four does not currently live nearby, they hope to do so in the future and visit the property as often as possible. During their visits, they enjoy a variety of recreational activities, including hiking, campfires, berry picking, and collecting chaga. The property features a diverse landscape, with hills and rock outcrops that offer exceptionally scenic and peaceful views of the Huron Mountains. It is very near and dear to the family and serves as a prized destination for vacations and quality time together.



SHERMAN CAMP TREE FARM

The 170.5-acre Jean Sherman Trust property is located four miles east of Dollar Bay and has been in the family since 1976. The eastern side borders Torch Lake and includes both a camp and a cottage, each off the grid. The numerous trails across the property provide the landowners, family, and friends with excellent hiking and wildlife viewing. The landowners visit regularly and take part in non-commercial management projects, such as creating natural habitats and protecting their oak trees. Gary Tupy, one of the current managers of the family trust, is pictured standing next to a brush pile created to provide cover and nesting habitat for rabbits and other small mammals—also known as 'rabbitat.'



Markets across Michigan and Wisconsin are challenging. The stumpage (standing timber) market is experiencing oversupply, reduced demand, and a decrease in logging capacity. However, regional investments are improving the economic climate.

During this time, forestland owners should remain focused on implementing their forest management plans to meet their current and future goals.

This is especially important to maintain compliance with property tax reduction programs and to promote forest health and productivity.

Stumpage prices are influenced by numerous unpredictable factors such as weather, mill demand, logging capacity, availability of quality logging contractors, regional supply, macro-economic conditions, foreign trade policy, and housing policy. Most of these factors are beyond a landowner's control. However, there are actions landowners can consider to help improve the value of their timber.

These include **utilizing timber harvesting specifications** that do not place unnecessary costs or burden on potential logging contractors, **offering favorable payment schedules, allowing flexible harvest timing, and investing in pre-harvest road improvements.** If necessary, forest management plans can be modified to reflect current market conditions while remaining in compliance with property tax reduction programs. Forestland owners should consult their forester to explore available options.



Pallet stock ready to ship out of Newberry Wood Products.

It's not all doom and gloom. **Quality timber harvesting occurs every day, and recent investments in the region are helping to improve the economic climate.** Two recent mill expansions in the Eastern Upper Peninsula are benefiting Green Timber clients:

- ▶ **Maples Sawmill recently completed a \$14.5 million upgrade** to their state-of-the-art hardwood facility near Hessel, Michigan, which now produces up to 50,000 board feet of quality lumber each day.
- ▶ **Newberry Wood Products in Newberry, Michigan, has expanded significantly.** For decades, this mill produced only aspen snow fencing, but it now utilizes aspen, softwood, and hardwood to produce pallet stock, surveying stakes, silt fencing, and snow fencing. Wood use has tripled to 120 cords per week, with further growth possible.

Green Timber clients understand the value of having a high-quality forest management plan tailored to their specific goals and objectives. Adhering to the recommendations outlined in these plans and implementing management practices as conditions allow is the most effective way to realize income from stumpage sales while maintaining and promoting a healthy, productive forest.



"WOOD" YOU LOOK AT THAT?

Green Timber
TRAVEL EDITION

"A SITKA SPRUCE GIANT"

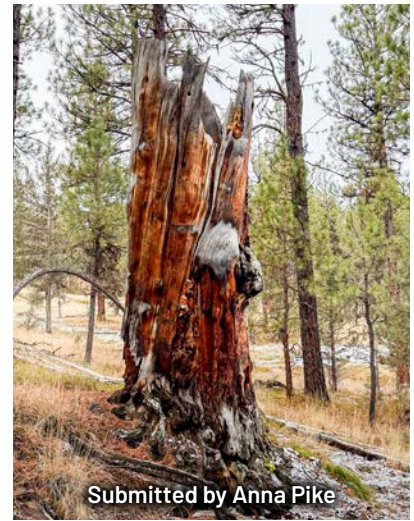
Green Timber forester Oliver Jensen is pictured standing at the base of a huge Sitka spruce located in an ancient, dried-up riverbed in the Ellsworth Creek Preserve near Long Beach, WA. The thick, moss-covered root collar made it too difficult to obtain a precise diameter measurement, but it was estimated to be eight feet. The height was measured to be 235 feet tall! This tree, the largest in the vicinity, holds legacy among a group of several other millennium-aged trees growing along the old riverbed.



Submitted by Oliver Jensen

"WILDLIFE COMMUNE"

Don't be deceived by the photo—this Oregon ponderosa pine stump, measuring 46 inches in diameter and 10 feet in height, has endured fire, storms, and time itself. Once towering, it now stands as a rugged relic; its charred base alludes to past wildfires, and its jagged top marks a battle lost to wind. Now as a snag, it serves as a home for insects, fungi, and wildlife. Even in death, the tree's story continues, proving that in nature, nothing truly goes to waste!



Submitted by Anna Pike

"A RECORD SPRUCE"

With help, Green Timber's President, Justin Miller, was able to get a diameter measurement of the World's Largest Spruce Tree. The measurement and photo were taken while working in the Quinault Rainforest in Washington State.



Submitted by Gerald Grossman

"PICTURE OF LONGEVITY"

Bristlecone pines survive in incredibly harsh conditions such as high altitude and desert areas. They are also known for their longevity, being the oldest known living organism on the planet. While this tree was photographed in Utah's Bryce Canyon National Park, some trees found in Nevada's Great Basin National Park are estimated to be roughly 5,000 years old! The trees in Bryce Canyon are much younger, with the oldest around 1,800 years.



Submitted by Shane Kleiman

"I'M A SURVIVOR"

This Live Oak tree is growing along the Gulf Coast in Alabama. Though not much to look at, it is impressive for having likely survived multiple hurricanes—a resilience partly attributed to its deep, expansive root system anchoring it in place.

WHAT IS A DEN TREE?

A den tree is a live tree that contains a natural cavity formed by decay.

They usually begin when a tree is injured by a fungus, insect, lightning strike, flooding, drought, falling trees or equipment scraping bark. When a branch breaks off a live tree, the exposed area is vulnerable to fungus and bacteria. Over time, the fungus and bacteria spread into the wound, causing the wood to decay and soften.

As the rot progresses, animals may further excavate and enlarge the softened area to create a cavity they can use for shelter or nesting.

WHO LIVES IN THERE?

Lots of critters depend on den trees at some point in their lives. In our midwestern forests, these cavities are commonly used by:

- ▶ Raccoons, opossums, and porcupines
- ▶ Squirrels
- ▶ Bats
- ▶ Wood ducks
- ▶ Owls
- ▶ Woodpeckers and sapsuckers
- ▶ Chickadees and warblers

Wildlife use den trees for sleeping, nesting, raising young, escaping predators, staying warm in the winter, hibernation, and cooling off in the summer. The size of a cavity can vary widely from a one-inch opening for small birds to large hollows for raccoons. In some cases, three-foot cavities for black bears do exist, but they are very rare and unlikely to be seen by most people.

ARE ALL DEN TREES THE SAME?

Den trees come in many forms, and the type of cavity often determines which wildlife species use them. Excavated cavities high in the tree are often created by woodpeckers and other birds and are usually small and round. These cavities can later be reused by chickadees, warblers, or flying squirrels. Cavities formed by decay that create irregular openings are used by raccoons, squirrels, owls, wood ducks, and sometimes bats. These cavities may be near the ground to shelter mammals, or higher up to provide safety from predators.



DEN TREE EXAMPLE: PORCUPINES

A very common den tree resident in Michigan is the porcupine. Porcupines rely on larger cavities in den trees for shelter, especially during the winter months. Porcupines do not hibernate so den trees are critical protection from cold temperatures, wind, and predators. They will often reuse the same den sites year after year. Porcupines favor hardwood trees such as oaks, maple, and basswood.

As seen in the photo above, a porcupine is actively living at the base of an ash tree. Looking closely, you can see that the bark has been stripped from the entrance of the den, as porcupines feed on the nutrient-rich layer found between the bark and the wood.

DID YOU KNOW?

Den trees are typically larger, older trees, often at least 18 inches in diameter. In Michigan, they're commonly found in hardwood species like oak, basswood, elm, beech, and maple. These species are long-lived trees that can survive decades of slow internal decay while still remaining alive.



Before You
PULL THE CORD:

CHAINSAW SAFETY

Spending time in your family forest—clearing trails, cutting firewood, or preparing for a bonfire—is one of the great rewards of land ownership.

To accomplish many of these activities, the chainsaw is the most common tool pulled off the shelf. If you choose to use a chainsaw, taking a few extra precautions can make all the difference. According to safety guidance from the Colorado State University High Plains Intermountain Center for Agricultural Health and Safety and Montana State University, preparation starts before you ever pull the cord.

TOP CHAINSAW TIPS

- ▶ **INSPECT THE SAW** to ensure the chain is sharp and properly tensioned, safety features are functioning, and fuel is handled safely. While operating a chainsaw, always keep children and bystanders at a safe distance, and avoid working alone whenever possible.
- ▶ **ALWAYS WEAR PROPER PERSONAL PROTECTIVE EQUIPMENT**, including eye and hearing protection, gloves with good grip, chainsaw chaps, long pants, and sturdy boots with good traction. Always maintain a firm, two-handed grip on the chainsaw while in operation, and never operate the saw with only one hand. Never cut above shoulder height and avoid cutting with the tip of the blade to prevent kickbacks.
- ▶ **WHILE CUTTING, MAINTAIN STABLE FOOTING AND AVOID TAKING STEPS.** When repositioning is needed, stop cutting, allow the chain to come to a full stop, engage the chain brake, and then move into a more stable position before resuming cutting. This process will reduce the risk of injury if you trip.

- ▶ **BEFORE FELLING A TREE, PLAN AND CLEAR AN ESCAPE PATH** opposite the direction of expected tree fall before making your final cut. As the tree begins to fall, stop cutting, engage the chain brake, and move quickly along the escape path to a safe distance away from the falling tree. You can always re-approach the tree if it doesn't fully fall, but you can't finish the job if it unexpectedly kicks back and strikes you.
- ▶ **ALWAYS KEEP AN EYE OUT FOR POTENTIAL HAZARDS.** Before felling a tree, look up! Check for dead or hanging branches in your tree or nearby trees that could fall during cutting. Be cautious when working with trees or logs under tension, as they can shift, split, or spring back unexpectedly. These situations require experience—avoid work that exceeds your skill level.

DID YOU KNOW?

A chainsaw is a powerful and useful tool, but it demands respect. Slowing down, staying alert, and following recommended safety practices will help ensure your time in the woods remains productive, enjoyable, and safe for everyone.

THE WOODLAND WIRE

Family Forest Carbon Program

The Family Forest Carbon Program (FFCP) first became available to Midwest forest landowners in 2023. At that time, eligible properties were required to be well stocked (greater than 100 square feet per acre of basal area) and primarily composed of northern hardwood species.

Since then, the FFCP has continued to evolve. Recent updates to enrollment requirements have expanded eligibility, opening the door for more landowners—and more acres—to participate in forest carbon markets.

One of the most significant changes is the inclusion of additional forest types. The FFCP now accepts a wider range of forests, with the primary exception of stands dominated by aspen or paper birch. **This means landowners managing oak, lowland conifers, mixed natural pine, and other forest types may now be eligible for enrollment.**

In addition, the minimum stocking requirement has been reduced. Forests with at least 80 square feet per acre of basal area can now qualify, further increasing accessibility for a broader range of properties.

If you are interested in exploring opportunities in forest carbon markets, we encourage you to reach out to your Green Timber forester. Previously ineligible properties may now meet the updated criteria.



NEW GRANT OPPORTUNITY

The Michigan Forest Association (MFA), with support from Michigan Association of Conservation Districts and funding from USDA Forest Service, is offering a new grant opportunity:

The Forest and Water Fund provides direct cash reimbursement of up to \$25,000 for projects to enhance your woods and protect our shared water resources by using specific practices on your forested land. The practices include high carbon reserves (protect mature trees and habitat), prescribed fire (restore ecosystems with controlled burns), ecological tree planting (plant native, climate-smart species), and resilience and health treatments (thin and cultivate diverse forests).

You can receive between 80% and 100% reimbursement for the costs of these practices, depending on your project.

Any private Michigan landowner with fewer than 2,500 acres of forest can apply for funds. MFA aims to ensure everyone has an opportunity to participate, especially those who are often underserved, including: new landowners who have owned their land less than ten years; veterans/active duty military; tribal landowners and organizations; and landowners with limited resources or in high-poverty regions.

Learn more by visiting forestandwaterfund.org or emailing the fund's program manager, Vic Lane at vic.lane@michiganforests.org

*Article provided by staff of the Michigan Forest Association

NEW TEAM MEMBER



Luke Ferzacca joined Green Timber in May 2025 and is based out of Marquette. Having grown up in Marquette, he has a deep appreciation for the area's forests. He attended Michigan Technological University and graduated in 2023. While in school, Luke interned at JM Longyear, and after graduation, he worked at Huber Resources Corp. Through these roles, he gained experience in timber marking, timber cruising, and preparing timber sales. In his free time, Luke enjoys downhill skiing, hunting, fishing, foraging, and spending time with friends and family.



FUTURE FORESTRY CONSULTING COURSE

Early plans are underway to introduce a Consulting Forestry course at Michigan Technological University (MTU).

The initiative is being developed and led by Rexx Janowiak, a member of the Association of Consulting Foresters (ACF), in collaboration with David Flaspohler, Dean and Professor in the College of Forest Resources and Environmental Science.

The proposed course would be offered to MTU students and taught by several Michigan-based ACF foresters, including four to six who are currently employed by Green Timber. The course would use Introduction to Consulting Forestry as its primary textbook. This book, a collaborative effort between ACF and the Society of American Foresters, was published in 2023. Each chapter was written by different ACF foresters. Notably, Justin Miller, President of Green Timber, authored the chapter on timber harvesting.

“Our goal is to provide MTU students with a solid foundation of what it takes to become a successful consulting forester while also giving them the opportunity to interact with a number of professional consulting foresters from across the state of Michigan,” notes Rexx Janowiak.

ANNUAL MEMBERSHIP INQUIRY UPDATE

In the past, our Western group members (legacy Green Timber Tree Farm Group) should be accustomed to receiving a paper copy of our Annual Membership Inquiry with this newsletter. We are moving that annual form to an electronic survey platform, that will be delivered via email moving forward. The Eastern group members (legacy Grossman Tree Farm Group) will also be adopting this electronic survey starting in 2027. Please keep an eye out for this email correspondence from your Group Manager.

Thanks! Jerry and Karl

GREEN TIMBER AWARDS



Members of Green Timber Consulting Foresters took center stage at the 2025 Michigan Society of American Foresters (SAF) Conference, bringing home several prestigious honors.

Green Timber President **Justin Miller** (second from the left) was named the **2025 MI SAF Forester of the Year**, while Senior Forester **Todd Miller** (far left) earned recognition as **Outstanding Tree Farm Inspector of 2025**. Group members **Rexx and Maria Janowiak (right)** were also honored as **Michigan's Outstanding Tree Farmers of 2025**.

Rexx has a long tenure of managing the Green Timber Tree Farm Group from the Pelkie office, and Maria serves as the lead for the USDA Northern Forests Climate Hub.



Each awardee received an engraved Tree Farm Buck knife—an award that didn't sit on the shelf for long. As you can see, Todd put his to use almost immediately during the 2025 hunting season!

Congratulations to this outstanding group of foresters for going above and beyond to uphold forestry standards both on and off the clock.



GREEN TIMBER

Ready to meet your goals

BARAGA: 906.353.8584

11511 US Highway 41, Pelkie, MI 49958

NEWBERRY: 906.293.8707

1013 Newberry Ave, Newberry, MI 49868

info@greentimberforestry.com

greentimberforestry.com



Forest Consulting | Management Plans

Timber Sale Administration | Forest Inventory

GIS Mapping | Carbon Projects | Forest Certification

Drone Services | Forest Health Assessments

FOREST HEALTH CHECKUP

Most of us keep an eye on our woods as we walk through them...

maybe noticing a patch of invasive plants creeping in, a dead tree or pocket of trees, or an area where young trees aren't coming back like they used to. Forests are always changing, and sometimes it helps to step back and take a broader look at what's going on.

Over the past year, our team has begun offering a new service:

The Forest Health Assessment

This simple, boots-on-the-ground visit is designed to give landowners a quick "check-up" on their woods.

Many landowners simply want to know: *Is my forest on the right track?* A Forest Health Assessment helps answer that question while offering a few practical ideas for keeping your woods healthy and resilient for the long run.

► **LEARN MORE:** greentimberforestry.com/forest-health-assessment

